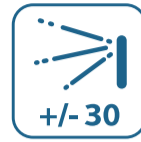


Face-TM900

Face & Palm Verification and Body Temperature Detection System



Wide Pose Angle Acceptance



Wide Palm Pose Angle Acceptance



Touchless for Better Hygiene



Temperature Detection



Masked Face

Features

- Visible Light Facial Recognition
- Better hygiene with touchless biometric authentication, temperature detection and masked individual identification
- Anti-spoofing algorithm against print attack (laser, color and B/W photos), videos attack and 3D mask attack
- Multiple Verification Methods: Face / Palm / Fingerprint / Card / Password

Anti-epidemic Functions

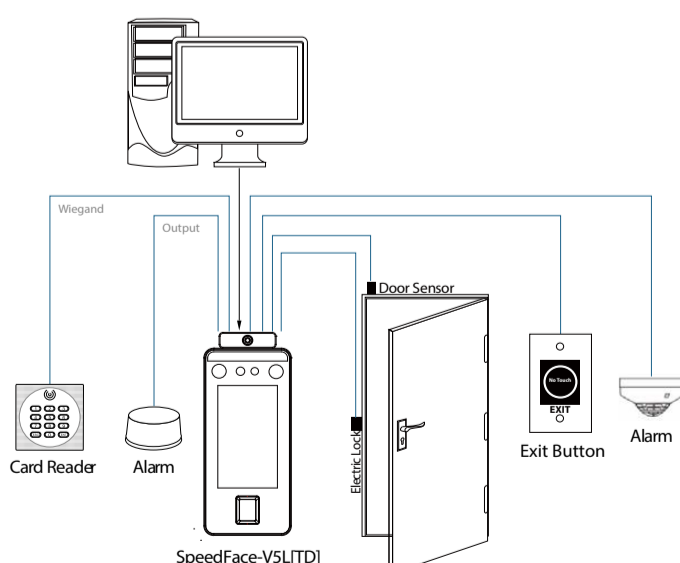
- Mask detection
- Body temperature detection
- Temperature Measurement Distance: 30 ~ 50cm (1~ 1.64ft)
- Temperature Measurement Accuracy: $\pm 0.3^{\circ}\text{C}$
- Temperature Measurement Range: 34 ~ 45°C (93.2 ~ 113°F)

* Facial verification for masked individuals will increase FAR. Palm verification for masked individuals is recommended. Temperature measurement data is for reference only, not for medical use. SpeedFace-V5L[TD] is available for indoor environments without wind or direct sunlight.

Specifications

Display	5-inch Touch Screen
Face Capacity	6,000
Palm Capacity	3,000
Fingerprint Capacity	6,000 (Standard); 10,000 (Optional)
Transactions	200,000
Operation System	Linux
Standard Functions	ADMS, T9 Input, DST, Camera, 9-digit User ID, Access Levels, Groups, Holidays, Anti-passback, Record Query, Tamper Switch Alarm, Multiple Verify Modes.
Hardware	900MHz Dual Core CPU, Memory 512MB RAM / 8G Flash, 2MP WDR Low Light Camera, Adjustable Light Brightness LED
Communication	TCP/IP, WiFi (Optional), Wiegand input / output, RS485
Access Control Interface	3rd Party Electric Lock, Door Sensor, Exit Button, Alarm output, Auxiliary Input
Facial Recognition Speed	$\leq 1\text{s}$
Biometrics Algorithms	Face V5.8 & Finger V10.0 & Palm V12.0
Power Supply	12V 3A
Operating Humidity	10% - 90%
Operating Temperature	16°C ~ 32°C (60.8°F ~ 89.6°F)
Dimensions (W*H*D)	91.93 * 220 * 22.5 (mm)

Configuration



Dimensions (mm)

